

# Local Authority COVID19 Medical Response Plan

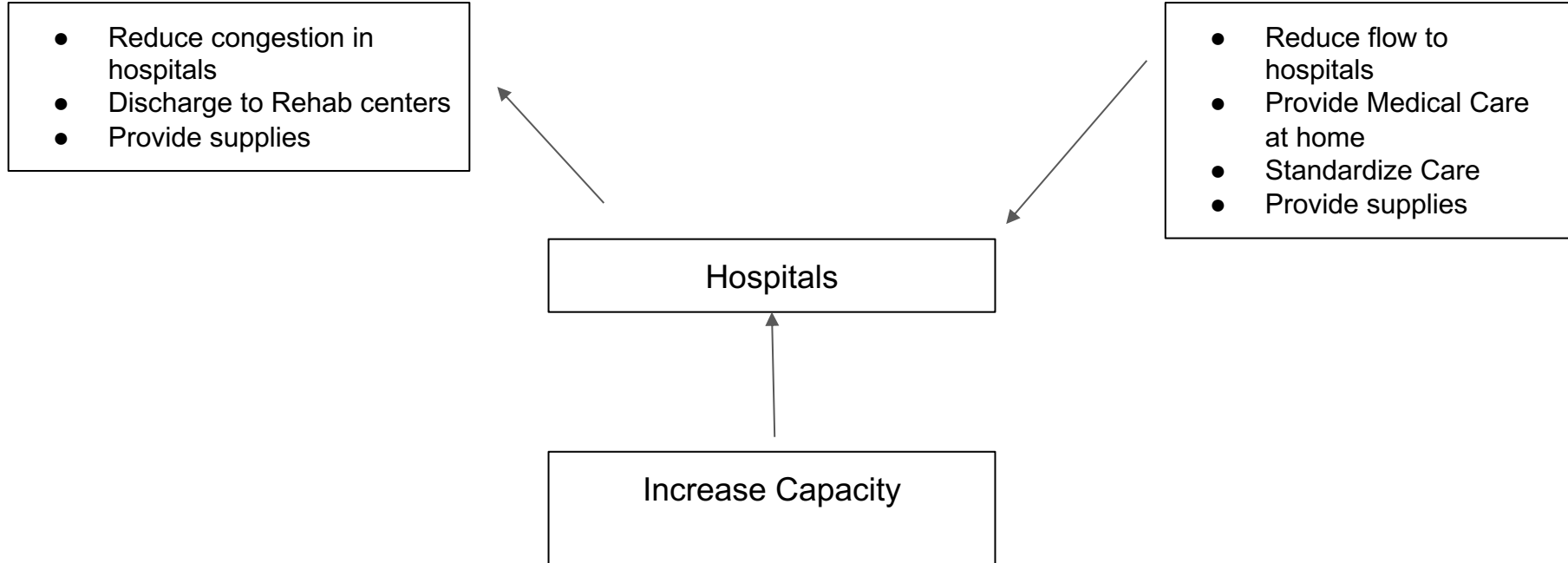
Meetings on Jan 18 - 2020 / Jan 20-2020  
Prepared by NCC sub-committee

- Grand Gen Mahmoud Asmar
- Dr Walid Khoury
- Dr Petra Khoury
- General Mohamed Sheikh (Mol)
- Georges Ketteneh (Lebanese Red Cross)
- Sharaf Abou Sharaf President of Lebanese Syndicate of Doctors
- Salim Abi Saleh President Syndicate of Doctors of the North
- Mirna Doumit President of Syndicate of Nurses
- Dr Mohamad Haidar (MOH)
- Dr Mahmoud Zalzali (MOH)
- Nabil Rizkallah (NCC member)
- Zahi Chahine DRM (Disaster Response Management PCM)

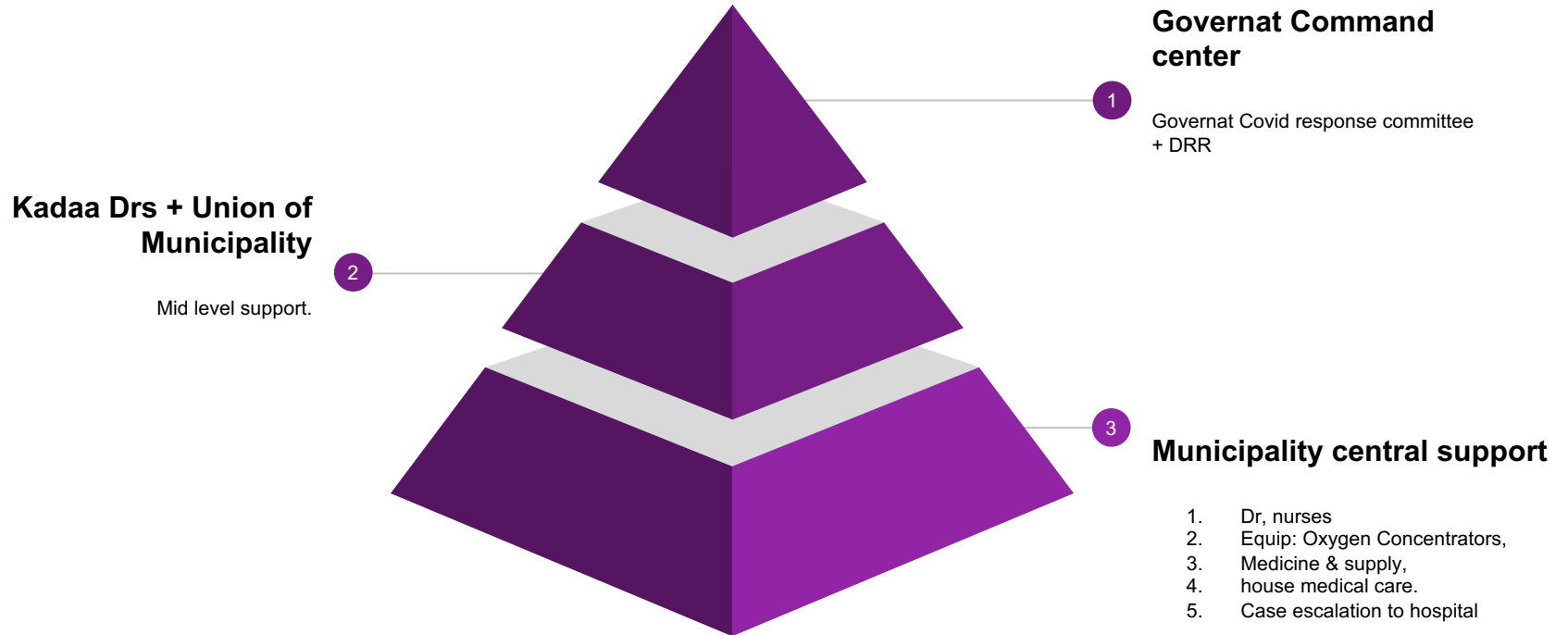
# Outline

- I. Medical Crisis Units
- II. Rehabilitation Centers

# Reduce flow to and decongest Hospitals



# I. Municipal level Covid Home care



## Existing Resources and Structure

### **Availability**

Emergency Response committees in Municipality

Lebanese Red cross

Kadaa level command centers

MoH Kadaa Drs  
Syndicate of Doctors

Nursing Syndicate

Quarantine Centers

Software to serve as Medical record: Heat map/IMPACT in Mol

# At Municipality level

1. Standard of care Day by Day
2. Engagement of local Drs.& Nurses
3. Local Dr/Nurses Training on Covid Protocol care
4. Municipality level database or centralization of O2 Concentrators
5. Hotline / whatsapp for local medical support

# Action Plan Community Health care support

<b><u>Task</u></b>	<b><u>Stakeholder</u></b>	<b><u>Timeline</u></b>
Standard of Care document	Syndicate of Doctors	complete
List of Available Doctors per Municipality	Syndicate of Doctors	complete
List of Available Nurses	Syndicate of Nurses	complete
Oxygen Concentrators availability	Donners & Municipalities, Ministries	Ongoing
Oxygen Concentrators Management and distribution	LRC	Ongoing
Pulse Oxymeter	Donners & Municipalities, Ministries	Ongoing
Pulse Oxymeter Management and distribution	LRC	Launch of Project
Coordination and Authorization of Municipalities, Governors	Ministry of Interior & Municipalities	Launch of Project

# Action Plan Community Health care support

<b><u>Task</u></b>	<b><u>Stakeholder</u></b>	<b><u>Timeline</u></b>
Patient Tracking and Health Record	Impact & Ministry of Interior	Wednesday 25-Jan-2020
Training of Drs and Nurses of COVID Protocols	Syndicate of Doctors and Nurses	Immediate after standards are submitted



# **LOP Proposal : Healthcare first-line management guidelines of CoViD patients for HCPs ( Need to be approved from MOH )**

## **Executive summary**

- Initial assessment
- Outline of Triage of a suspicious case
- Indication for in-person clinical [MD] assessment
- Indication for hospital referral
- Indication for hospital admission
- Criteria for ICU admission
- Patient transport: LRC Hotline and Call center : 140

# **LOP Proposal : Healthcare first-line management guidelines of CoViD patients for HCPs ( Need to be approved from MOH )**

## **Executive summary**

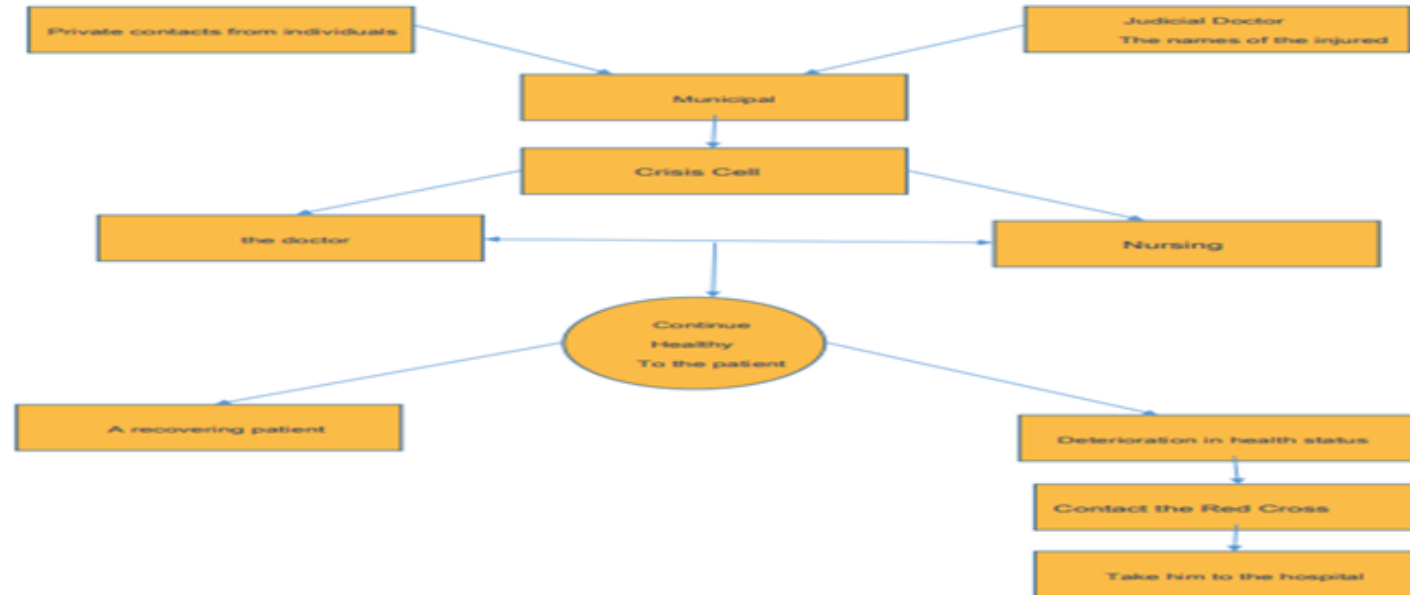
- Home care management: in coordination with Municipal accredited HCC
- Overview on emergent therapies
- Co-morbidities:
- Medical Record: Admission, follow-up, transfer, discharge: Includes Medical and Nursing notes, as well as HCC and LRC notes
- HCP Roles

LON Proposal : project to create cells to manage the Corona crisis within the municipalities – work flow

## Executive summary

- **Target**
- **Crisis Cell**
- **Mechanism of Action**
- **Required matters**
- **Execution**
- **Project funding**

# LON Proposal : project to create cells to manage the Corona crisis within the municipalities – work flow



Syndicate of Nurses in Lebanon  
Creation of cells to manage the Corona crisis within the municipalities

## Budget for Medical Crisis Unit

Capital Minor Equipment to Supplies	Workforce
Oxygen Concentrators ( 5L) 2500 * 600\$ = 1.5 M\$ once	MD 100 * 70\$ = 7000\$/Day = 210 000\$/month
Pulse Oxymeter 10000 * 25\$ = 250 000\$/ month	
Thermometer 200 unit * 25 = 5000\$ once	RN 200* 100\$ = 200 00\$/Day = 600 000\$/month
Nasal Cannula 10000 * 2\$ = 20 000\$/ month	

## II. Rehabilitation centers

Use the Quarantine center to provide Mid Level care to decongest hospitals.

- Provide centers with
- Medical equipments:
  - Concentrators
  - Vital signs monitoring
- Drs
- Nurses
- Medical Supplies
- Food and Beverage
- Housekeeping
- Other

# Action Plan Transforming Isolation centers to Rehabilitation Centers to decongest hospitals to absorb the surge

Number of rooms 600

Collaboration between WHO and UN

Funding available from the Donners (1 M still available) Once the business development plan is presented to transfer the money from Isolation to Rehab

<b><u>Task</u></b>	<b><u>Stakeholder</u></b>	<b><u>Timeline</u></b>
Support of Health care workers Drs and Nurses	WHO	Launch of Project
Medical Equipment such as but not limited to (Vitals, 10 Liters Concentrators)	WHO	Launch of Project
Referral to centers coordination	MOH/Hospitals/LRC	Launch of Project